

# CHRISTOPHER HODGSON



**Whitstable**

**£365,000** Freehold



---

# Whitstable

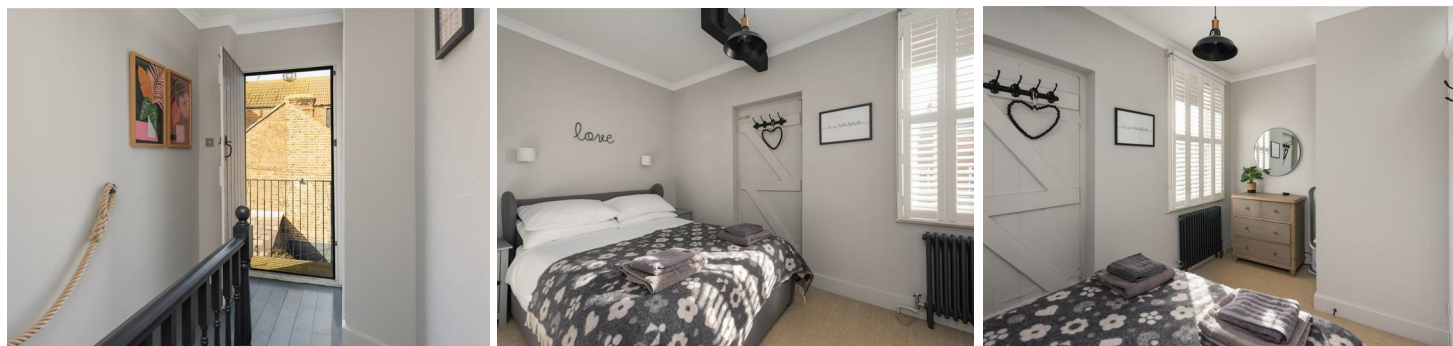
## *The Little Cottage, 40 Swanfield Road, Whitstable, Kent, CT5 4HN*

A beautifully restored Victorian building, and former cycle repair shop, conveniently situated within Whitstable's desirable conservation area. The property is moments from the bustling town centre with its boutique shops and highly regarded restaurants, and is a short distance from Whitstable station (0.6 miles). The town is famed for its native Oysters, impressive sunsets, pebble beach and working harbour, all of which are just a pleasant stroll away.

This unique and interesting house exudes charm and character and benefits from light filled, open-plan living

accommodation which has been presented in enviable style throughout and is arranged to provide a spacious living room with high ceiling and incorporating a bespoke kitchen by Fired Earth, two bedrooms and a stylish bathroom with luxurious fittings.

The recently landscaped, private courtyard garden has been designed for ease of maintenance and provides an ideal space to entertain. No onward chain.



### LOCATION

Swanfield Road is a highly desirable location situated within close proximity to central Whitstable being accessible to shops, bus routes, station, golf course and to the beach. Whitstable is a fashionable town by the sea offering a good range of amenities including well regarded restaurants, watersports facilities and working harbour. The mainline railway station is just moments away, providing fast and frequent links to London (Victoria) approximately 80 minutes. The high speed Javelin service provides access to London (St Pancras) with a journey time of approximately 73 minutes. The A299 is accessible providing a dual carriageway link to the M2/A2 giving access to the channel ports and connecting motorway network.

### ACCOMMODATION

The accommodation and approximate measurements (taken at maximum points) are:

#### GROUND FLOOR

- Open-Plan Living Room/Kitchen 19'3" x 13'11" (5.87m x 4.25m)

#### FIRST FLOOR

- Bedroom 1 13'8" x 7'7" (4.17m x 2.31m)

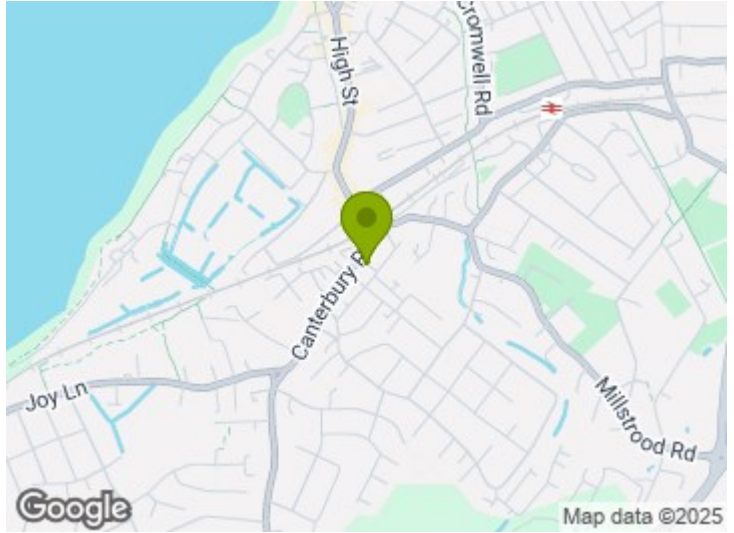
- Bedroom 2 8'8" x 6'6" (2.64m x 1.98m)

- Bathroom

#### OUTSIDE

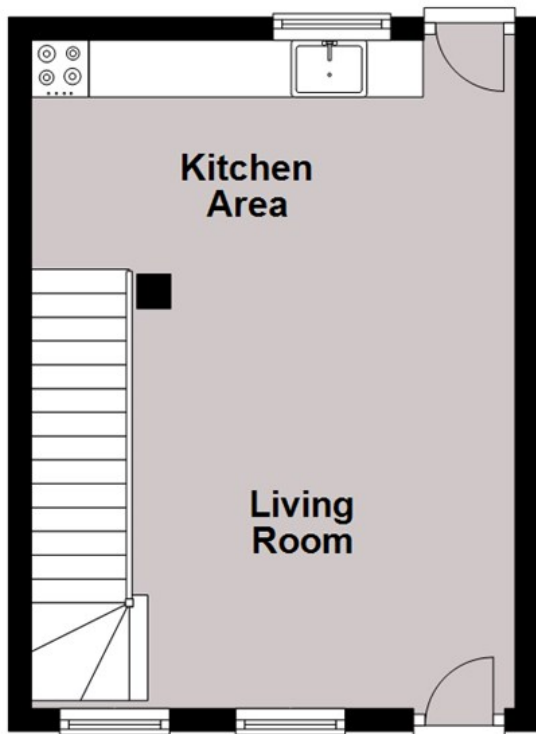
- Courtyard Garden 20' x 17' (6.10m x 5.18m)





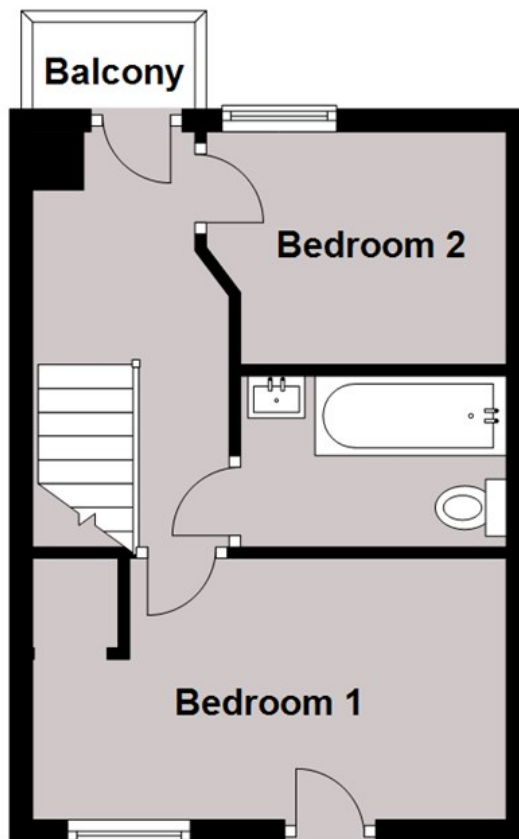
## Ground Floor

Approx. 24.9 sq. metres (268.5 sq. feet)



## First Floor

Approx. 25.1 sq. metres (270.7 sq. feet)



Total area: approx. 50.1 sq. metres (539.2 sq. feet)

**Council Tax Band B. The amount payable under tax band B for the year 2024/2025 is £1,708.60.**

Christopher Hodgson Estate Agents for itself and as for the vendor or lessor (as appropriate) gives notice that: 1 These particulars are only a general outline for the guidance of intending purchasers or lessees and do not constitute in whole or in part an offer or a Contract. 2 Reasonable endeavours have been made to ensure that the information given in these particulars is materially correct but any intending purchaser or lessee should satisfy themselves by inspection, searches, enquiries and survey as to the correctness of each statement. 3 All statements in these particulars are made without responsibility on the part of Christopher Hodgson Estate Agents or the vendor or lessor. 4 No statement in these particulars is to be relied upon as a statement or representation of fact. 5 Neither Christopher Hodgson Estate Agents nor anyone in its employment or acting on its behalf has authority to make any representation or warranty in relation to this property. 6 Nothing in these particulars shall be deemed to be a statement that the property is in good repair or condition or otherwise nor that any services or facilities are in good working order. 7 Photographs may show only certain parts and aspects of the property at the time when the photographs were taken and you should rely upon actual inspection. 8 No assumption should be made in respect of parts of the property not shown in photographs. 9 Any areas, measurements or distances are only approximate. 10 Any reference to alterations or use is not intended to be a statement that any necessary planning, building regulation, listed building or any other consent has been obtained. 11 Amounts quoted are exclusive of VAT if applicable. 12 Whilst reasonable endeavours have been made to ensure the accuracy of any floor plan contained in these particulars, all measurements and areas are approximate and no responsibility is taken for any error, omission or mis-statement. This plan is for illustrative purposes only and should be used as such by any prospective purchaser. 13 Any mapping contained within these particulars is for illustrative purposes only and should be used as such by any prospective purchaser. No responsibility is taken for any error, omission or mis-statement. 14 Any computer generated images contained within these particulars are for illustrative purposes only and should be used as such by any prospective purchaser.

Energy Efficiency Rating	
Current	Potential
A	A
B	B
C	C
D	D
E	E
F	F
G	G

England & Wales  
EPC Directive  
2002/91/EC

95-97 TANKERTON ROAD, WHITSTABLE CT5 2AJ | CHRISTOPHERHODGSON.CO.UK

